



Minimally Invasive Care for Chest and Lung Diseases

Critical Care, Pulmonary and Sleep Associates offers comprehensive Interventional Pulmonary care. Our Interventional Pulmonologists utilize state-of-the-art, minimally invasive techniques to diagnose and treat lung cancer, airway disorders and pleural diseases while lessening the number of procedures and tests patients must undergo.



Unlike other doctors that perform CT-guided biopsies of lung masses then test lymph nodes, we perform Endobronchial Ultrasound (EBUS)

to diagnose the mass and stage the lymph nodes in a single procedure.

Interventional Pulmonary Clinic Locations:

274 Union Blvd. Ste 110
Lakewood, CO 80228

950 E. Harvard Ave. Ste 690
Denver, CO 80210

Procedural Service Locations:

St. Anthony Hospital
11600 W. 2nd Pl.
Lakewood, CO 80228

Porter Adventist Hospital
2525 S. Downing St.
Denver, CO 80210

Contact Information:

Scheduling: 303-951-0595

Fax: 303-942-3701

Email:

IP_Scheduling@critcaremd.com

Website: www.critcaremd.com

Serving the Colorado community for over 40 years as a leading Pulmonary Disease provider, Critical Care, Pulmonary and Sleep Associates is dedicated to excellence in patient care through a collaborative, team approach throughout the continuum of care.



Interventional Pulmonary Services

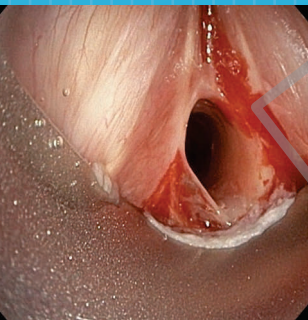


CRITICAL CARE,
PULMONARY & SLEEP
ASSOCIATES

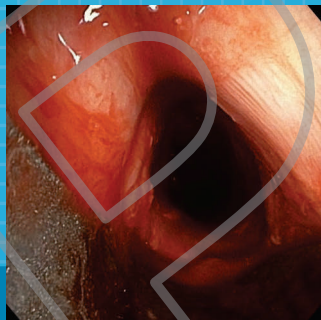
WELCOME TO CRITICAL CARE, PULMONARY & SLEEP ASSOCIATES

Interventional Pulmonology uses highly specialized, minimally invasive techniques to diagnose and treat a wide range of complex airway disorders and pleural diseases such as lung cancer, pleural effusions, bronchial and tracheal stenosis, tracheobronchomalacia, central airway obstruction and any malignancy affecting the lungs or airways.

Our providers work as part of a large multidisciplinary team to treat some of the most complex diseases in pulmonary medicine. Partnering with ENT, Thoracic Surgery, Oncology, Radiation Oncology and Interventional Radiology to provide thorough and exemplary patient care.



Before



After

Tracheal Stenosis:

Severe tracheal stenosis before and after rigid bronchoscopy with dilation.

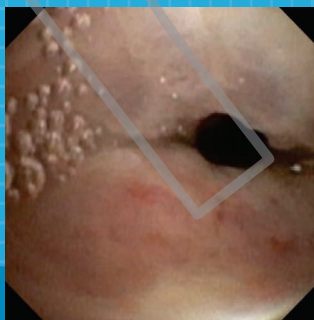
COMPREHENSIVE TESTING AND PROCEDURES

Diagnostic Procedures:

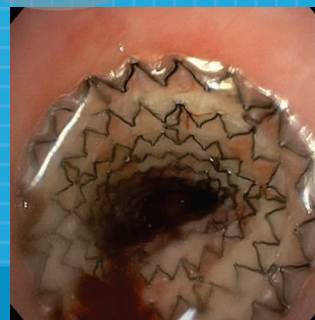
- Flexible Bronchoscopy
- Endobronchial Ultrasound (EBUS)
- Electromagnetic Navigation Bronchoscopy (ENB)
- Pleural Ultrasound
- Thoracentesis

Therapeutic Procedures:

- | | |
|----------------------|---------------------|
| • Rigid Bronchoscopy | • Brachytherapy |
| • Airway Stenting | • Cryotherapy |
| • Balloon Dilation | • Bronchial |
| • Percutaneous | Thermoplasty |
| Tracheostomy | • Fiducial Marker |
| • Tumor Destruction | Placement |
| Utilizing: | • Large Volume |
| Electrocautery, | Pulmonary Lavage |
| Argon Plasma | • Tunneled Pleural |
| Coagulation (APC), | Catheters (PleurX™, |
| Laser Therapy | Aspria™) |



Before



After

Tracheal Obstruction:

Almost complete obstruction of the trachea due to tumor involvement with restoration of patency after tracheal stent placement.



Dr. Mary Elmasri is one of the few Fellowship trained Interventional Pulmonologists in Colorado, with unique experience in the field.

Dr. Elmasri is board certified in Interventional Pulmonary Medicine, Pulmonary Disease, Internal Medicine, and Critical Care. She completed her Pulmonary Critical Care Fellowship at the University of California, San Diego and Interventional Pulmonary Fellowship at Duke University in Durham, NC.